

Aurora Ridge Addendum

Site Events

Date	Event
10/14/2009	Gas flow records begin
11/10/2009	Power output records begin

Hardware

Device	Serial #	Output	Carbon Catcher Data Point	Notes
Sage SRP	47135	CF & CFM	SCF_Total_Engine1	Mod-bus connection
Sage SRP	47136	CF & CFM	SCF_Total_Flare	Mod-bus connection
Gen-Tec power meter		KWh (acc)	G1_KWH_Output	Mod-bus connection

Database Setup

<u>Chan Name</u>	<u>File Name</u>	<u>column</u>
SCFM_Flare,	FlowRate,	2
SCFM_Engine1,	FlowRate,	3
SCF_Total_Flare,	GasUsage,	2
Flare1_Temp,	GasUsage,	3
SCF_Total_Engine1,	GasUsage,	4
G1_KWH_Output,	GasUsage,	5

Sensor Verification

Power Meters

Engine Display:	442 - 439 kW
CC:	894644 10kWh in 82 sec= 439.0244 kW
Fluke:	on single conductor: 42 kW + 48 kW = 90 kW * 4 conductors = 360 kw 110 A, 130 A, 112 A, 117 A conductors measured on 110A

Gas Meters

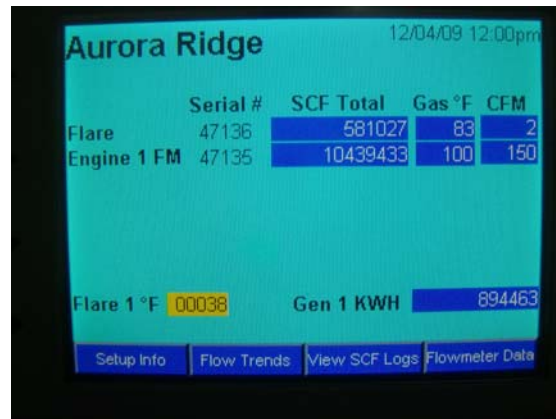
	Sage	CC	CC_ACC
Engine Meter	149.5	148	10441270
Flare Meter	2.5	3	581058
Total	183	151	13011861

*error code on total flow

Photos



Carbon Catcher Panel – Located in back left corner of electrical room.



Carbon Catcher screen



FGE – Sage flow meter, measuring gas to engine.



FGF – Sage flow meter, measuring gas to flare



Intelisys NT and output to Carbon Catcher