

## FACILITY POWER QUALITY - DATA SUMMARY

Arrow Linen

03/01/05 to 12/31/05

### Generator Off

|                      | Line 1 |        |         | Line 2 |        |         | Line 3 |        |         | Totals |      |       |
|----------------------|--------|--------|---------|--------|--------|---------|--------|--------|---------|--------|------|-------|
|                      | Min    | Avg    | Max     | Min    | Avg    | Max     | Min    | Avg    | Max     | Min    | Avg  | Max   |
| Voltage (V)          | 12.3   | 125.2  | 130.5   | 86.2   | 124.6  | 129.1   | 99.3   | 124.6  | 131.3   | n/a    | n/a  | n/a   |
| Current (amps)       | 83.26  | 148.77 | 1312.24 | 65.19  | 124.31 | 1221.43 | 40.68  | 101.60 | 1183.03 | n/a    | n/a  | n/a   |
| True Power (kW)      | n/a    | n/a    | n/a     | n/a    | n/a    | n/a     | n/a    | n/a    | n/a     | 7.2    | 32.2 | 353.4 |
| Apparent Power (kVA) | 10.4   | 18.5   | 157.1   | 8.1    | 15.4   | 145.8   | 5.0    | 12.6   | 142.0   | 15.9   | 44.0 | 435.0 |
| Power Factor (-)     | n/a    | n/a    | n/a     | n/a    | n/a    | n/a     | n/a    | n/a    | n/a     | 0.05   | 0.68 | 1.00  |
| Voltage THD (%)      | 0.95   | 2.50   | 4.30    | 0.85   | 2.25   | 4.00    | 0.91   | 2.38   | 7.12    | n/a    | n/a  | n/a   |
| Current THD (%)      | 3.21   | 26.69  | 48.62   | 2.67   | 25.07  | 53.19   | 5.09   | 43.77  | 147.89  | n/a    | n/a  | n/a   |
| Frequency (hz)       | n/a    | n/a    | n/a     | n/a    | n/a    | n/a     | n/a    | n/a    | n/a     | 59.9   | 60.0 | 60.1  |

### Generator On

|                      | Line 1 |         |         | Line 2 |        |         | Line 3 |        |         | Totals |       |       |
|----------------------|--------|---------|---------|--------|--------|---------|--------|--------|---------|--------|-------|-------|
|                      | Min    | Avg     | Max     | Min    | Avg    | Max     | Min    | Avg    | Max     | Min    | Avg   | Max   |
| Voltage (V)          | 109.6  | 121.3   | 128.1   | 108.8  | 121.2  | 126.8   | 108.9  | 121.1  | 127.1   | n/a    | n/a   | n/a   |
| Current (amps)       | 94.77  | 1008.83 | 1471.50 | 82.57  | 946.87 | 1440.08 | 71.21  | 950.06 | 1381.29 | n/a    | n/a   | n/a   |
| True Power (kW)      | n/a    | n/a     | n/a     | n/a    | n/a    | n/a     | n/a    | n/a    | n/a     | -1.0   | 57.1  | 362.2 |
| Apparent Power (kVA) | 11.9   | 121.6   | 174.7   | 10.3   | 114.1  | 172.2   | 8.8    | 114.3  | 164.7   | 11.4   | 347.9 | 514.0 |
| Power Factor (-)     | n/a    | n/a     | n/a     | n/a    | n/a    | n/a     | n/a    | n/a    | n/a     | 0.00   | 0.16  | 1.00  |
| Voltage THD (%)      | 0.04   | 1.56    | 8.55    | 0.03   | 1.33   | 3.32    | 0.01   | 1.46   | 5.41    | n/a    | n/a   | n/a   |
| Current THD (%)      | 0.22   | 8.11    | 35.26   | 0.19   | 8.23   | 33.57   | 0.20   | 9.10   | 68.28   | n/a    | n/a   | n/a   |
| Frequency (hz)       | n/a    | n/a     | n/a     | n/a    | n/a    | n/a     | n/a    | n/a    | n/a     | 0.4    | 59.9  | 60.1  |

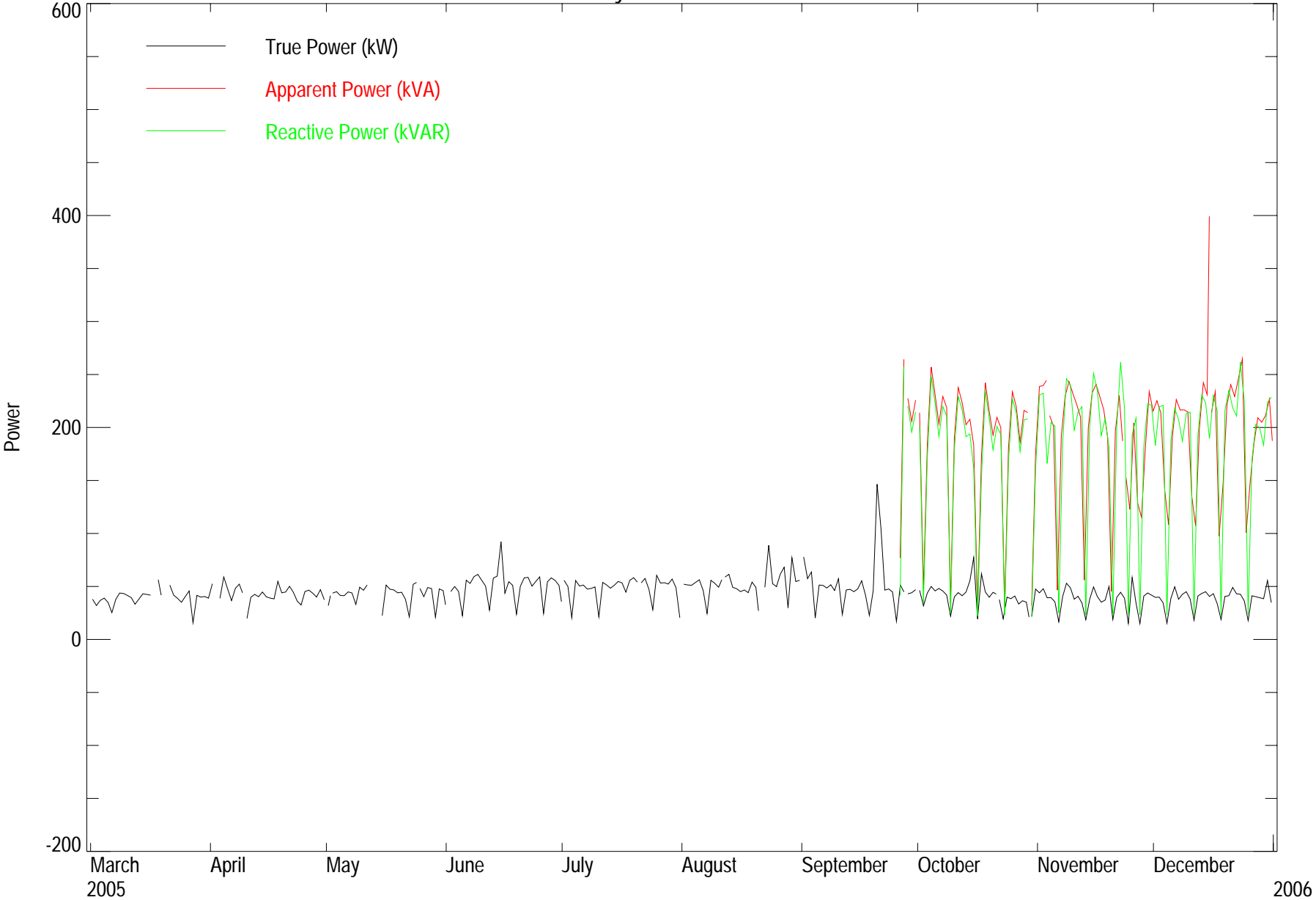
## FACILITY POWER QUALITY - DATA SUMMARY

Arrow Linen

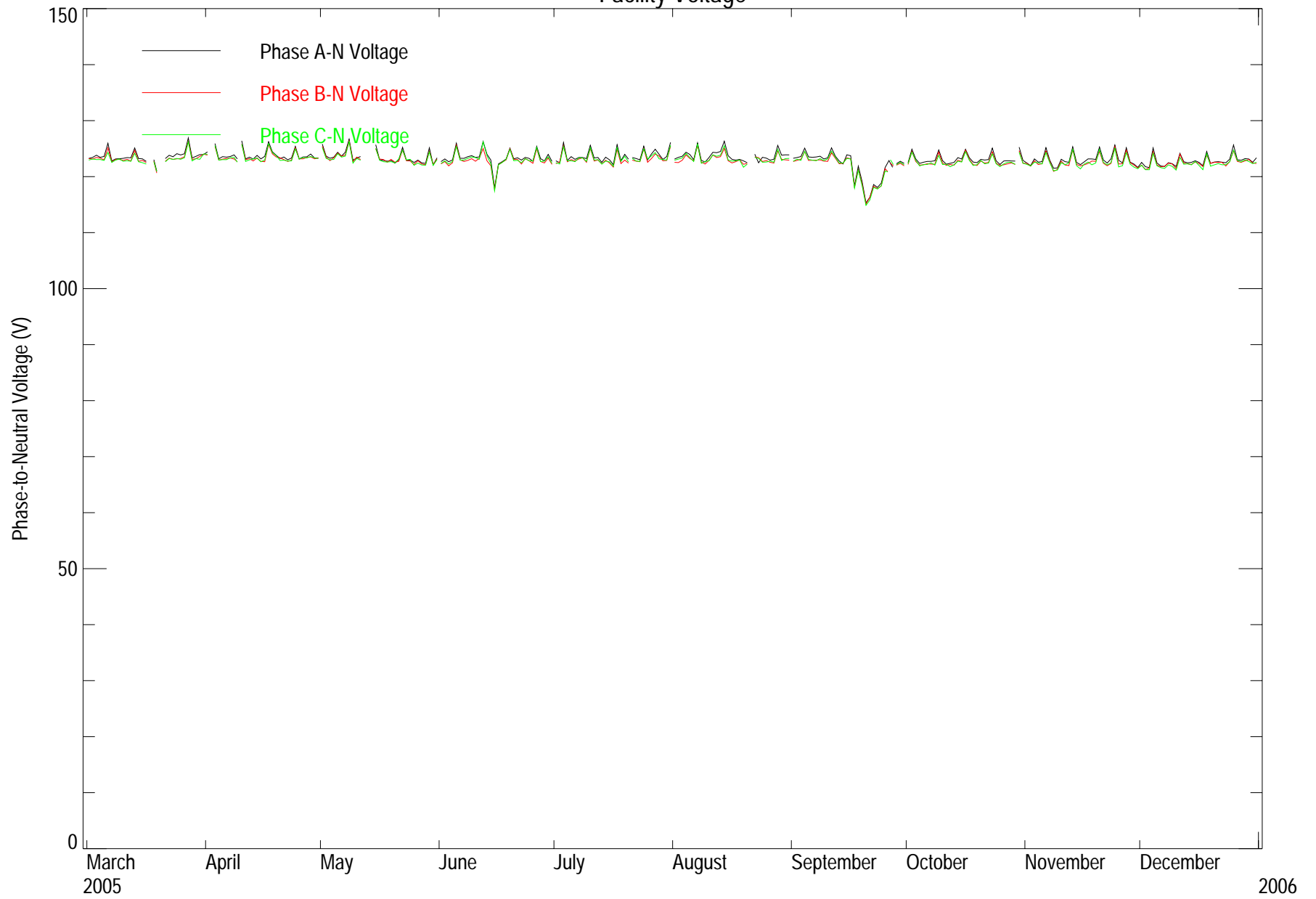
03/01/05 to 12/31/05

| Date     | Good Data (%) | Facility Apparent Power (kVAh) | Facility Reactive Power (kVARh) | Facility True Power (kWh) | Power Factor (-) |
|----------|---------------|--------------------------------|---------------------------------|---------------------------|------------------|
| Mar 2005 | 91.90         | -                              | -                               | 25564.90                  | -                |
| Apr 2005 | 95.56         | -                              | -                               | 29135.40                  | -                |
| May 2005 | 93.41         | -                              | -                               | 29498.40                  | -                |
| Jun 2005 | 99.86         | -                              | -                               | 36141.40                  | -                |
| Jul 2005 | 99.70         | -                              | -                               | 33105.20                  | -                |
| Aug 2005 | 96.57         | -                              | -                               | 35724.10                  | -                |
| Sep 2005 | 99.69         | 23739.14                       | 22043.71                        | 36495.80                  | -                |
| Oct 2005 | 99.87         | 134545.67                      | 126941.70                       | 30373.60                  | 0.23             |
| Nov 2005 | 99.93         | 136169.27                      | 130310.65                       | 26207.50                  | 0.19             |
| Dec 2005 | 99.97         | 145382.52                      | 139241.27                       | 27690.50                  | 0.19             |
| Total    | 97.63         | 439836.59                      | 418537.31                       | 309936.81                 | 0.70             |

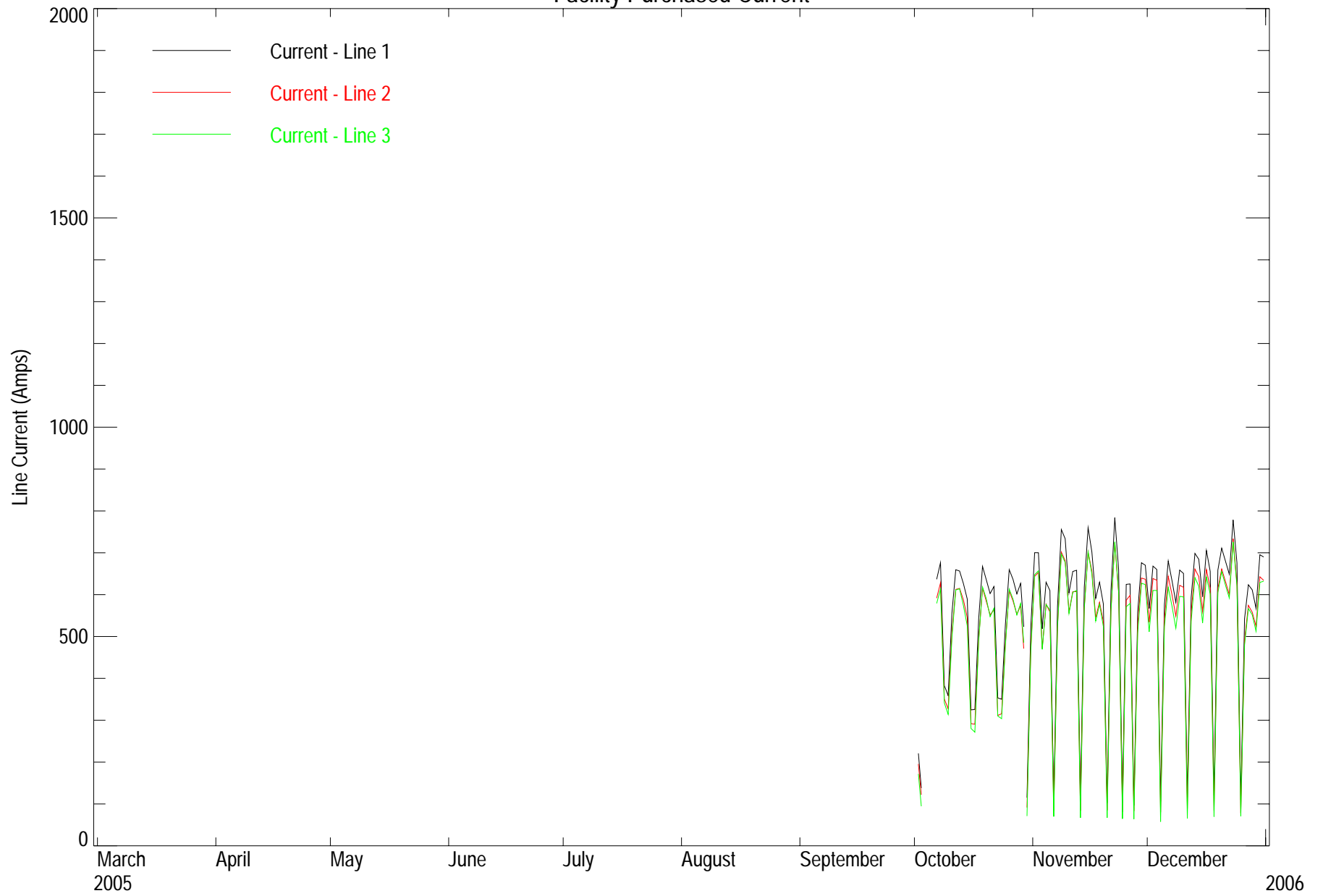
# Facility Purchased Power



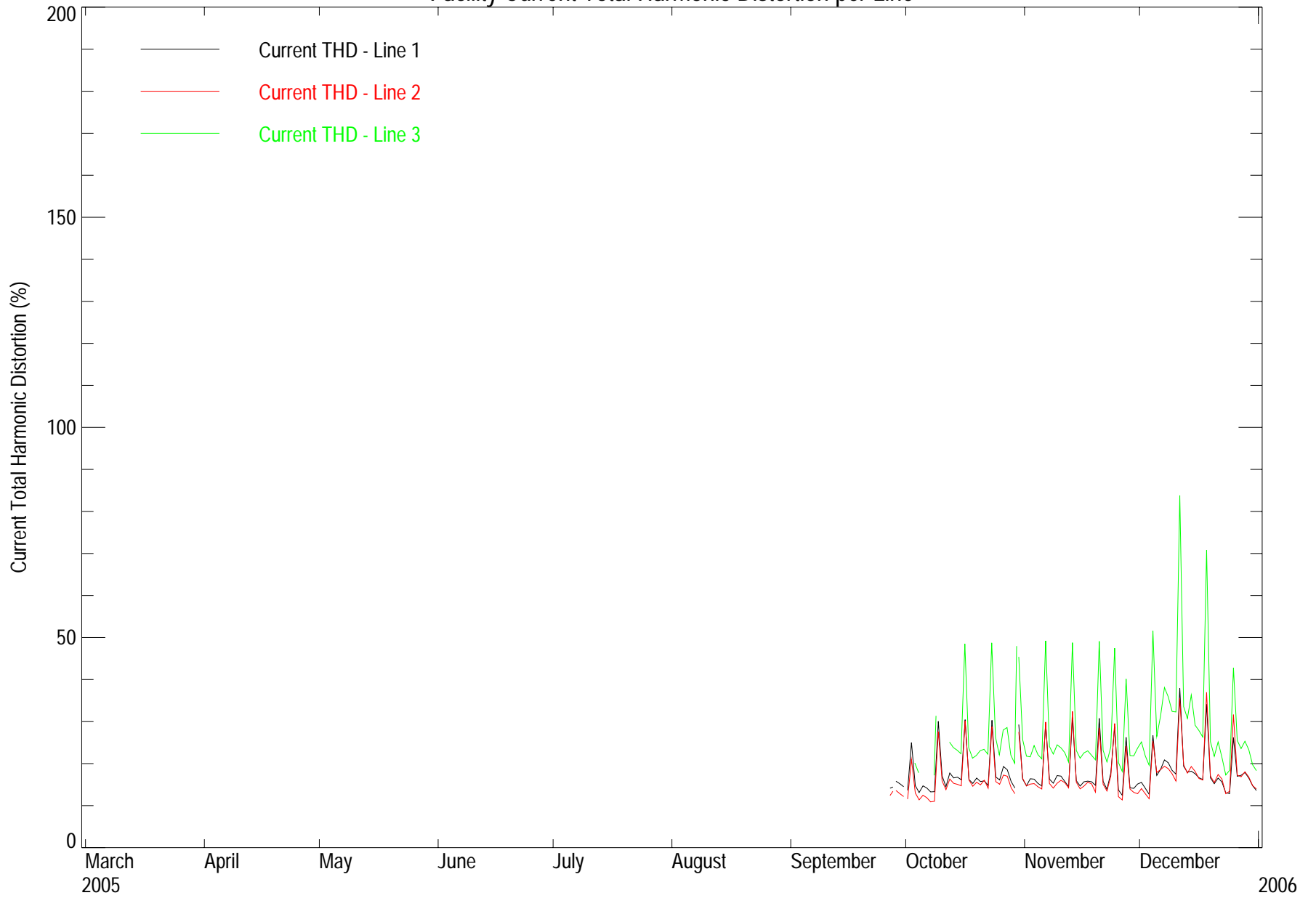
# Facility Voltage



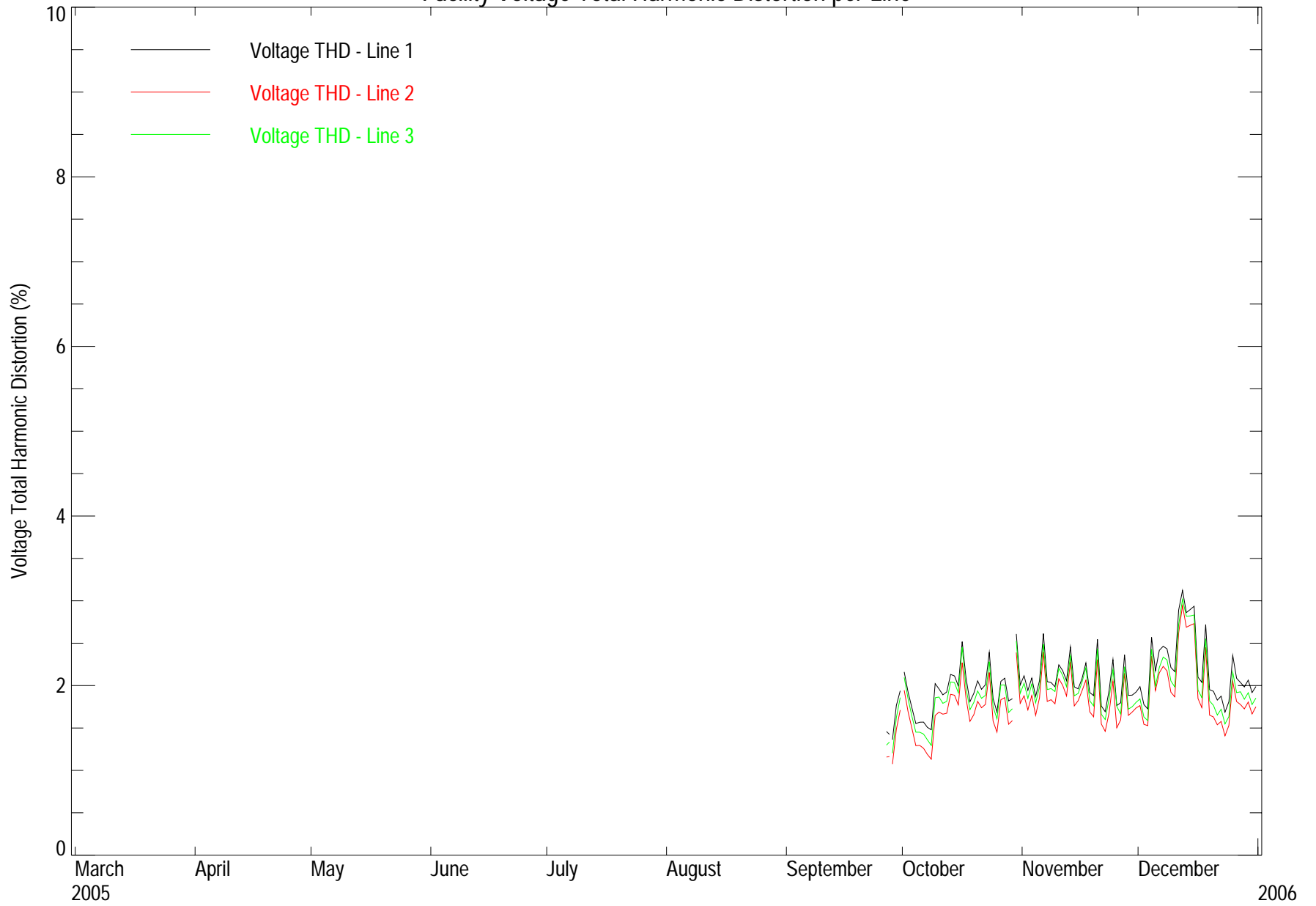
# Facility Purchased Current



Facility Current Total Harmonic Distortion per Line



Facility Voltage Total Harmonic Distortion per Line



# Facility Purchased Power Factor

